

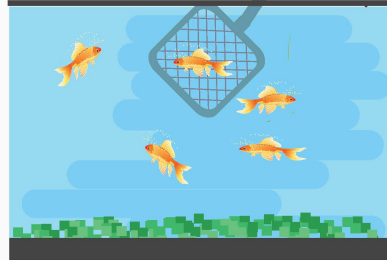
METHOD TO BAGGING & TRANSPORTING FISH FROM STORE TO HOME AQUARIUM

TIPS FOR BAGGING FISH

1 Fill the bag with 1/3 water to leave room for 2/3 air (the more air, the better).



2 Use a wet net and specimen container to net the fish.



3 Add the fish to the bag. Add 1 ml. (one pump) of API STRESS COAT™ water conditioner to the bag.



4 Capture 2/3 air in the bag and twist it. Place an elastic band around the twisted end of the bag.



TIPS FOR TRANSPORTING FISH FROM STORE TO HOME AQUARIUM

1 Once home, float the bag for 10 to 15 minutes to acclimate the fish.



2 Release the new fish into the home aquarium (do not add bagged water to tank).



3 Add STRESS COAT to your tank once the fish is released. Dose according to your tank size and bottle instructions.



What causes stress?

The transfer of the new fish challenges their immune system and reduces their slime coat as does entering a new environment. Any existing fish in the home aquarium may investigate the fish and nip at them. The new fish will need to adjust to their surroundings and fellow tank mates. All of these items can cause stress to the fish.

How to help with stress?

Adding STRESS COAT helps to resolve these issues, healing any damaged tissue during transport or introduction, reinforces their slime coat, and reduces fish stress by up to 40%. The advantages of STRESS COAT have been scientifically proven. Find more information on our website: www.apifishcare.com/product/stress-coat.

